



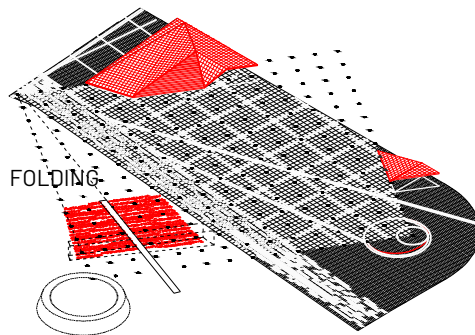
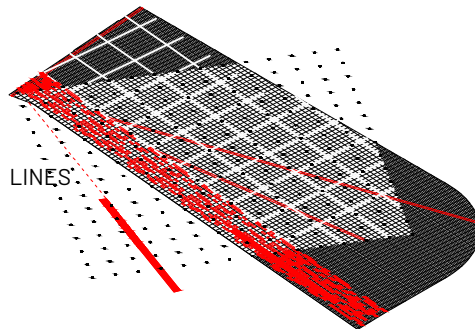
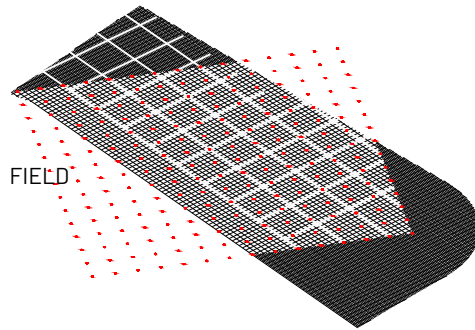
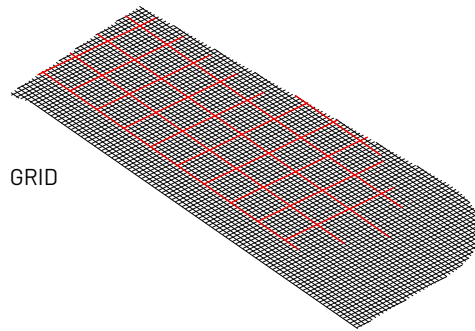
0 25 50 100

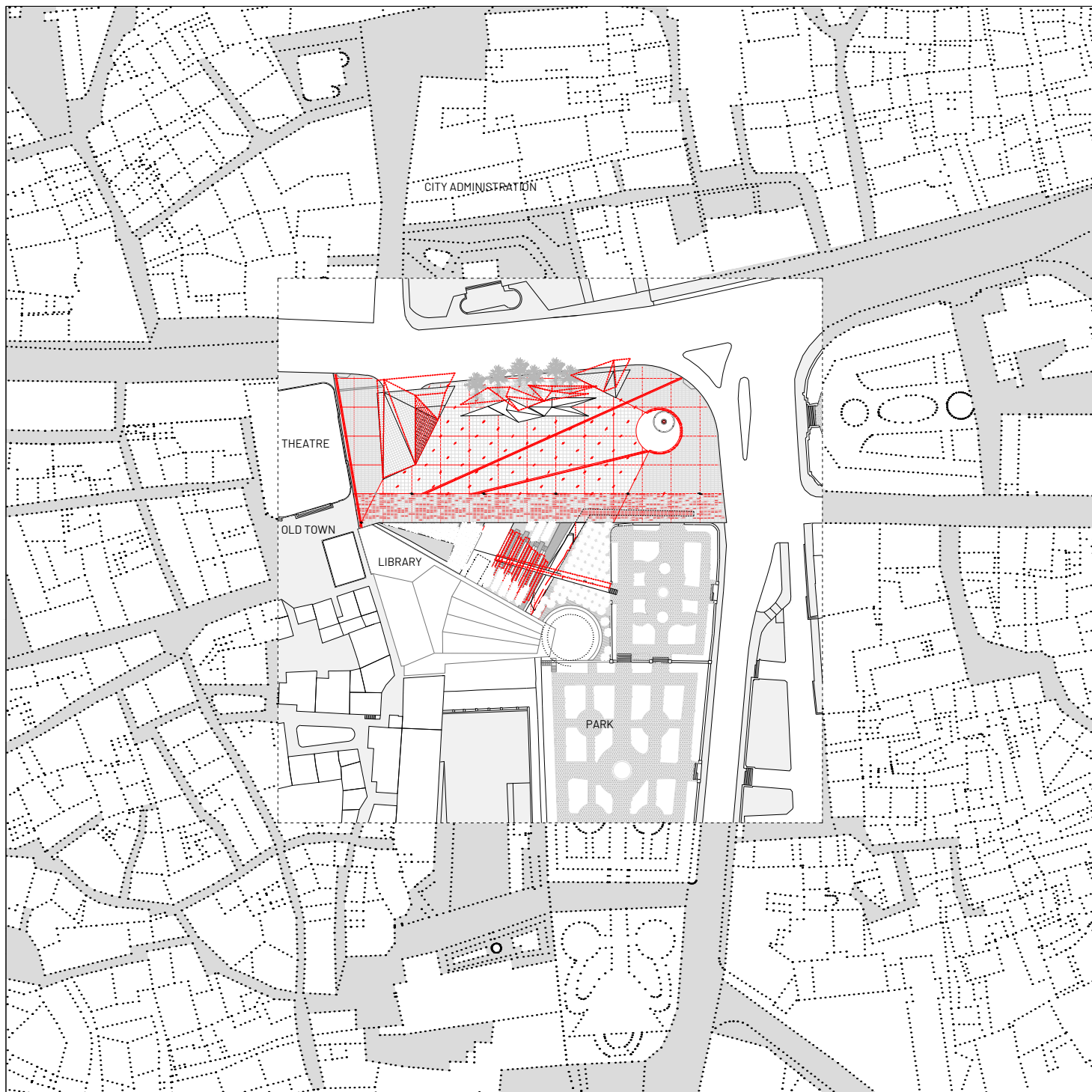
250

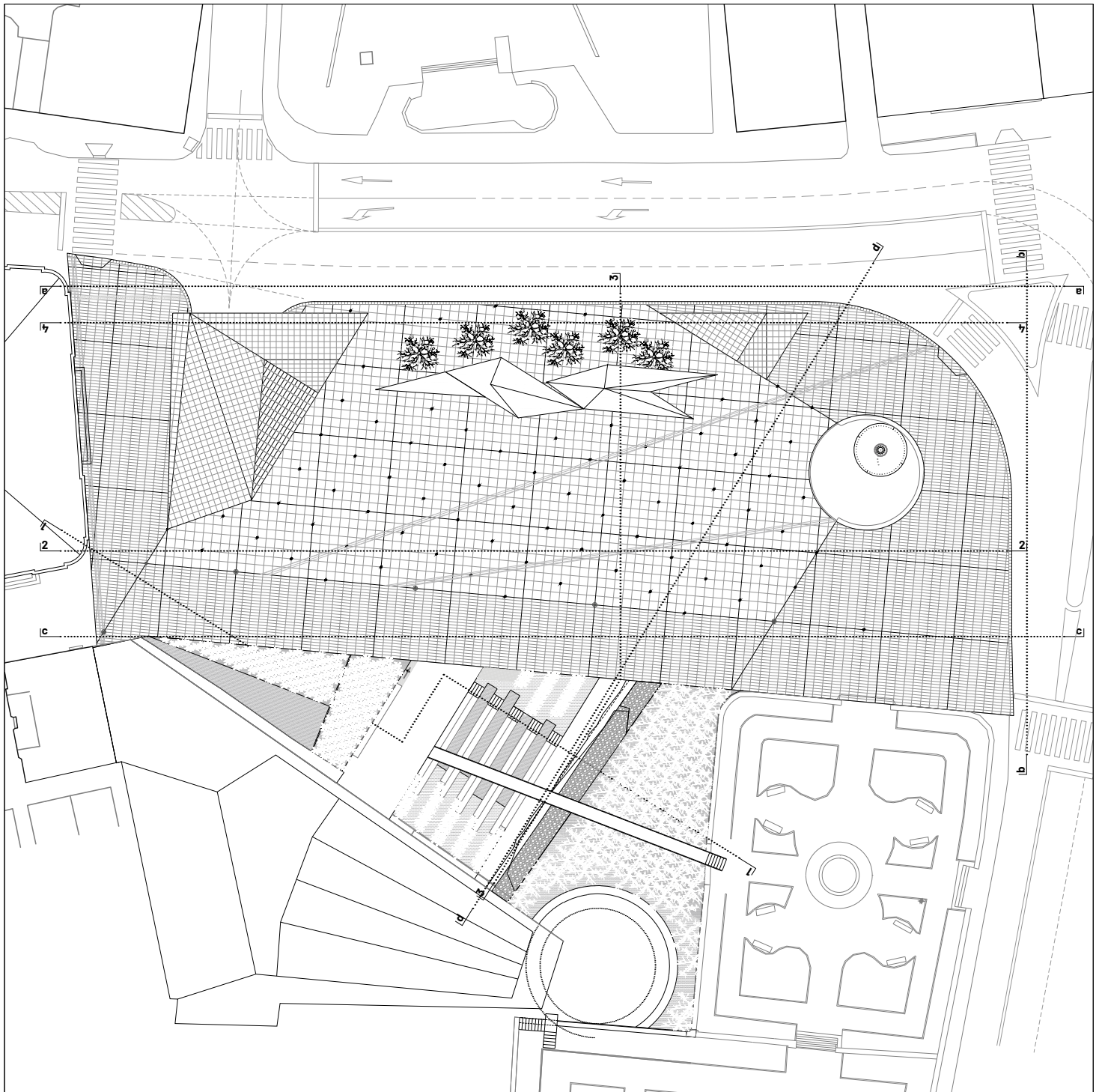
500

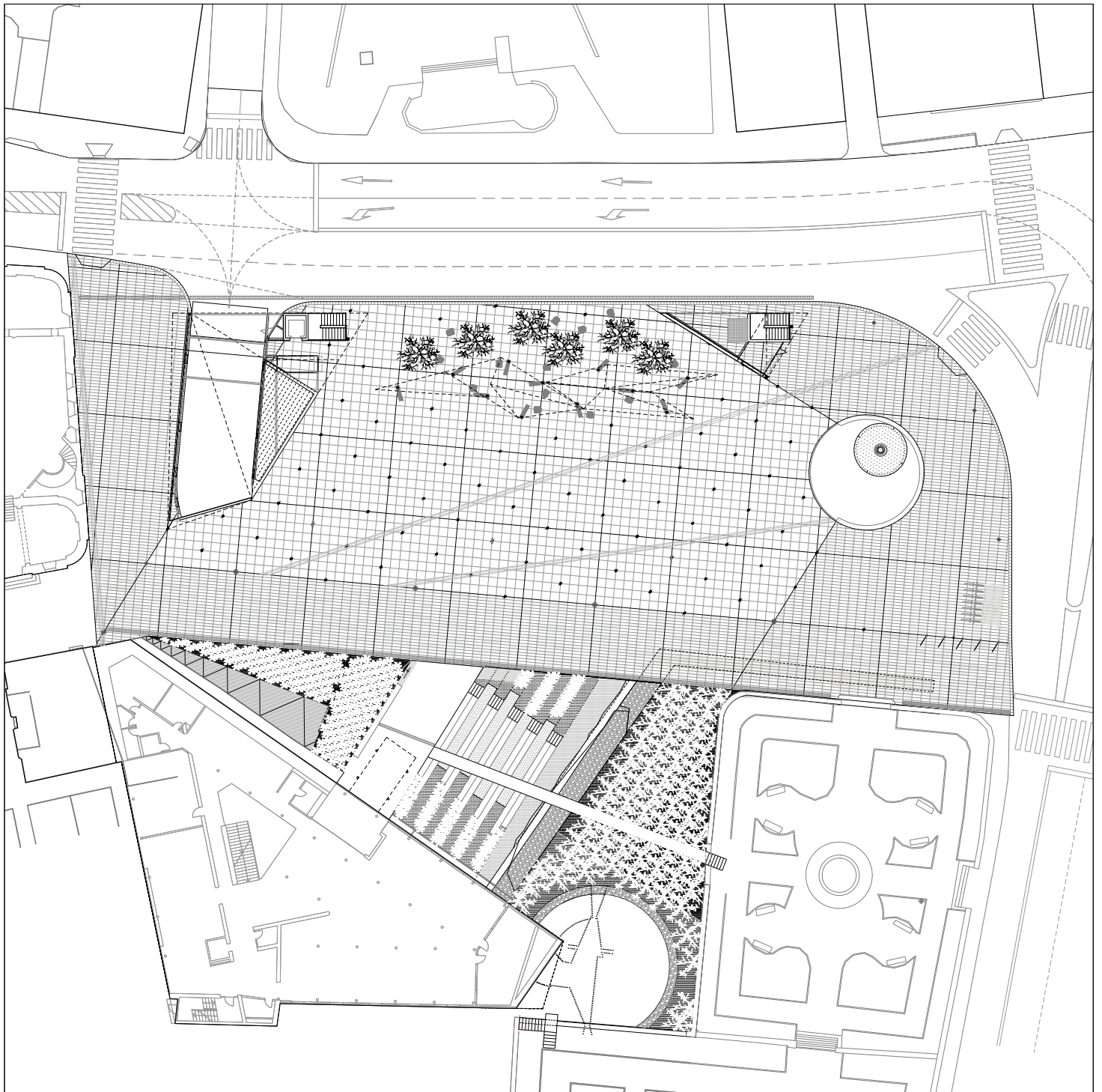
LOCATION









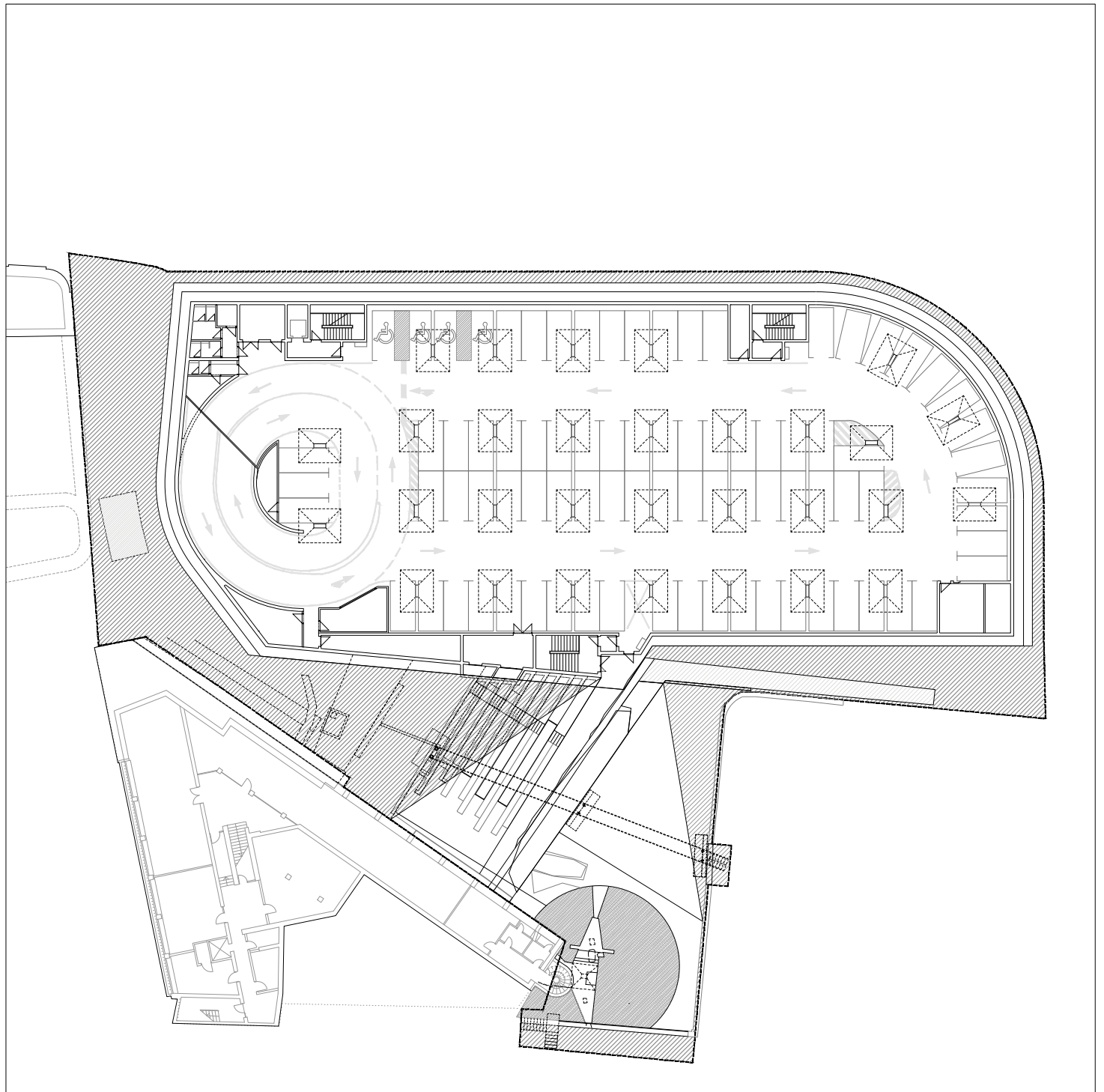


0 | 2 | 5 | 10 | 25

50

GROUND FLOOR PLAN



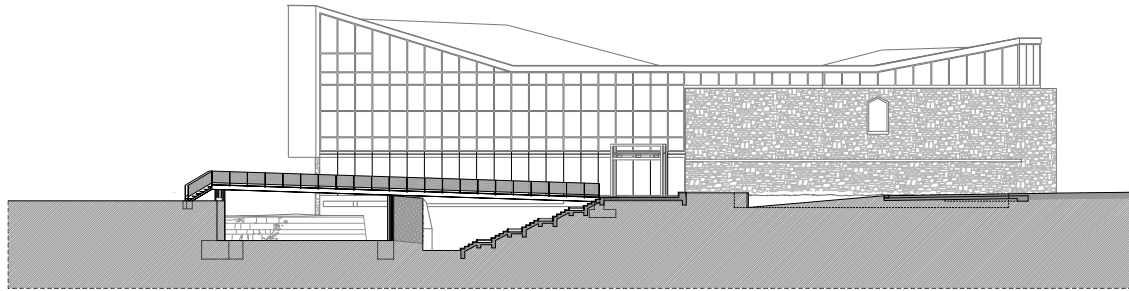


0 5 10 25

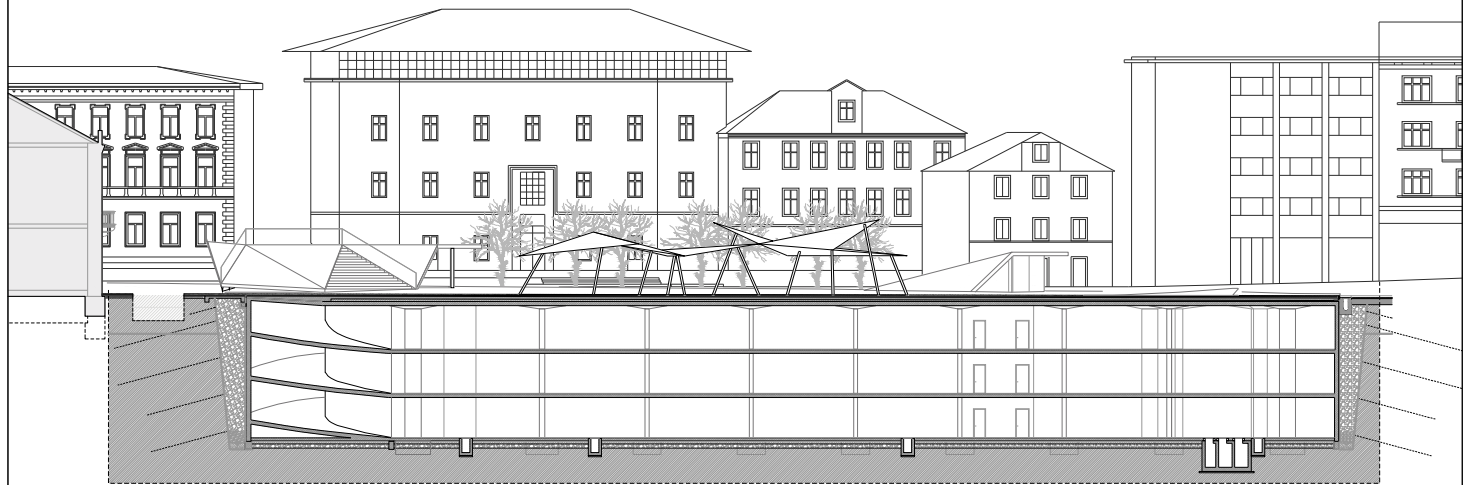
50

LEVEL -1





section 1

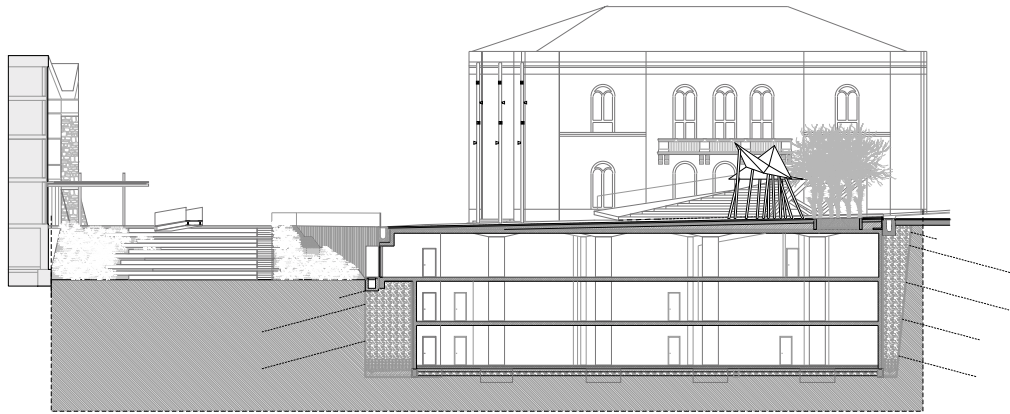


section 2

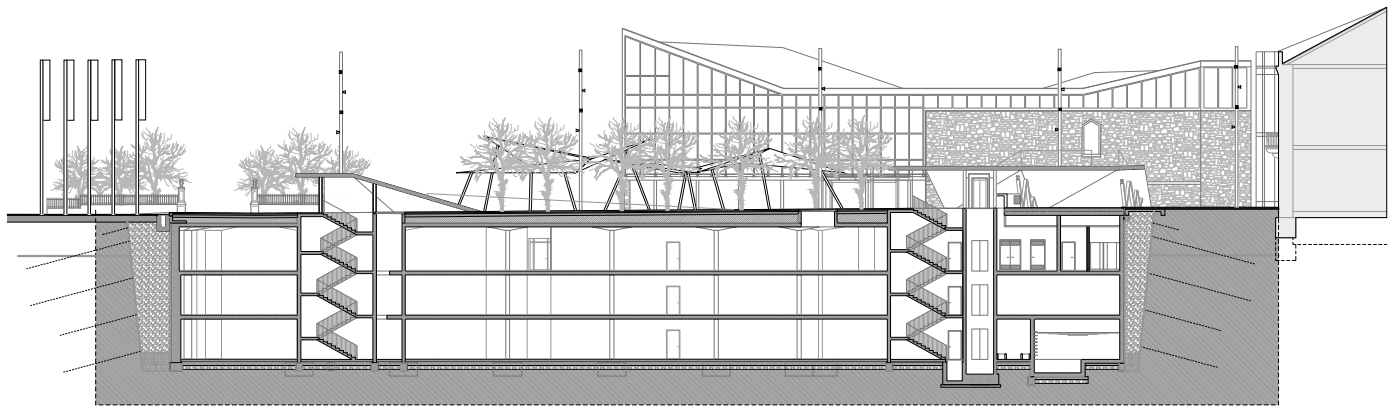


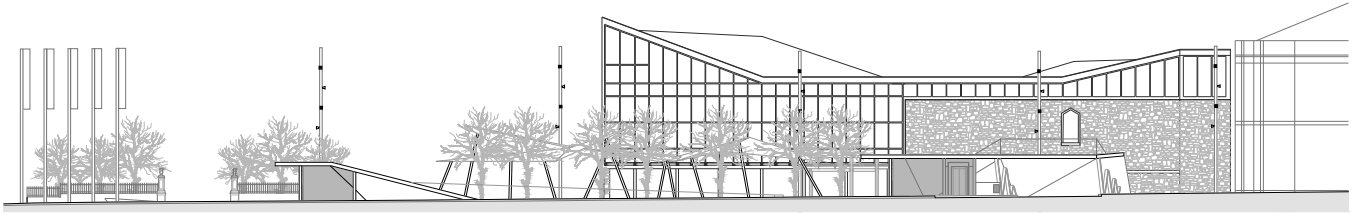


section 3

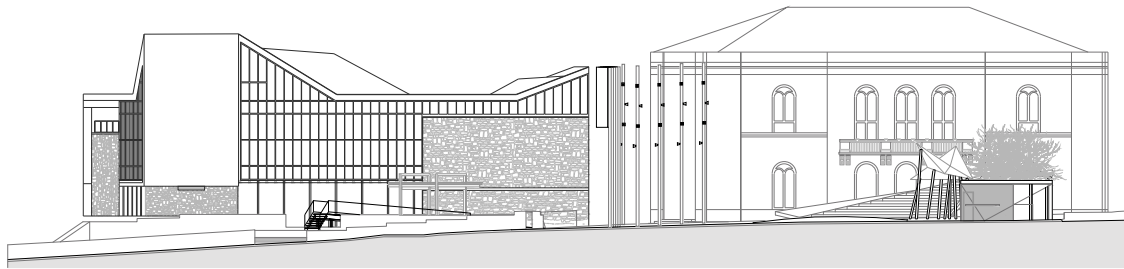


section 4

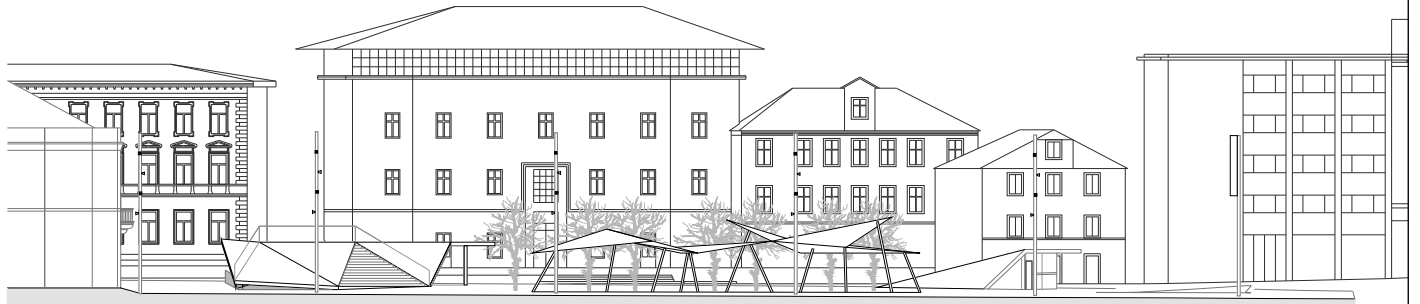




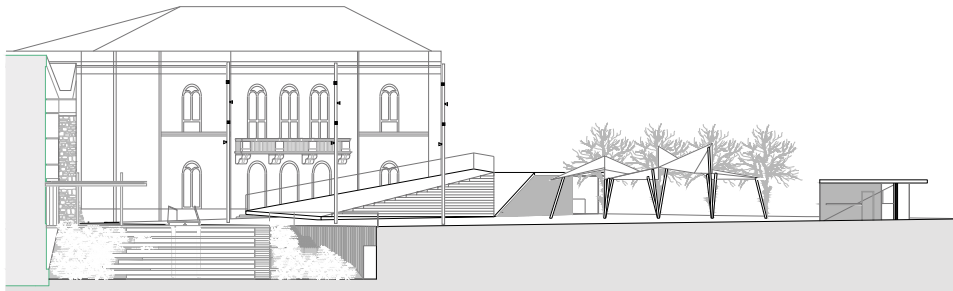
facade a



facade b

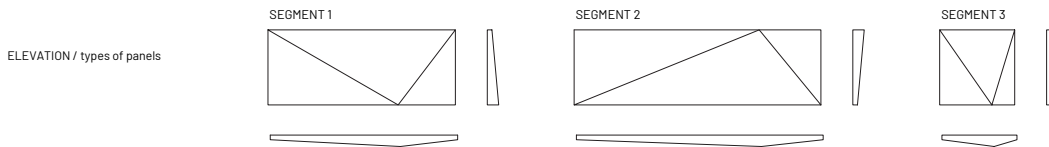
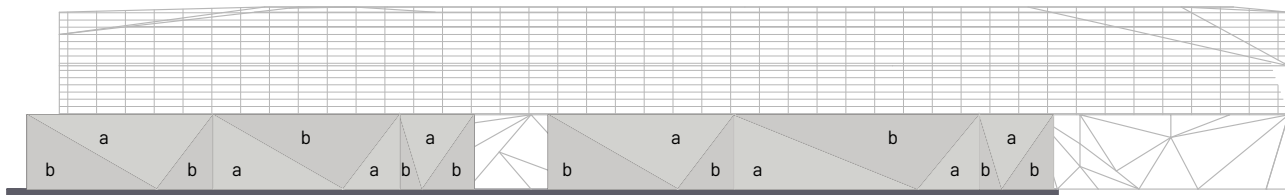
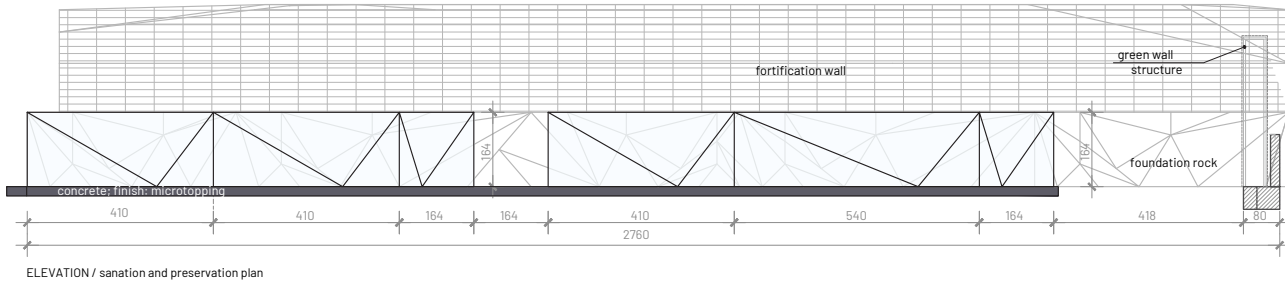
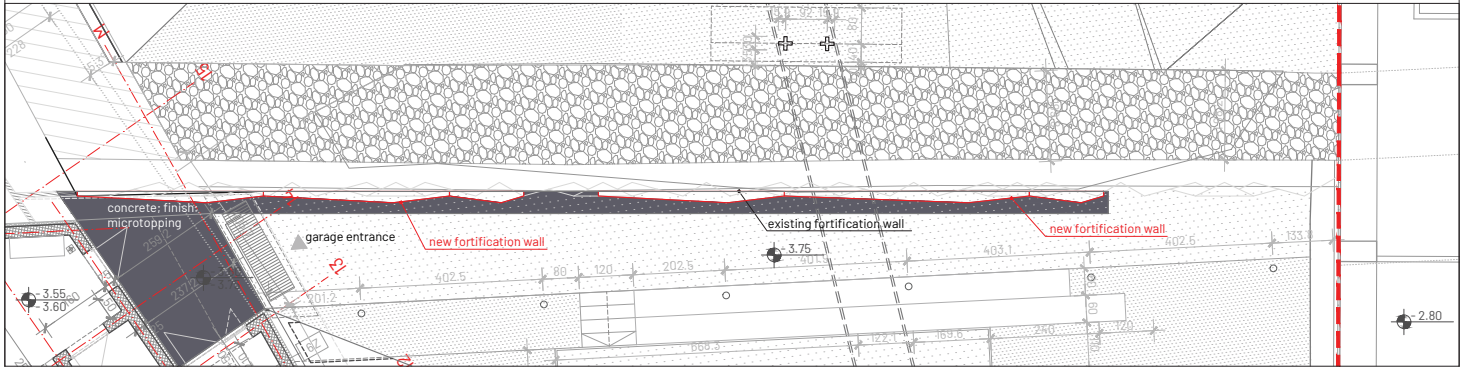
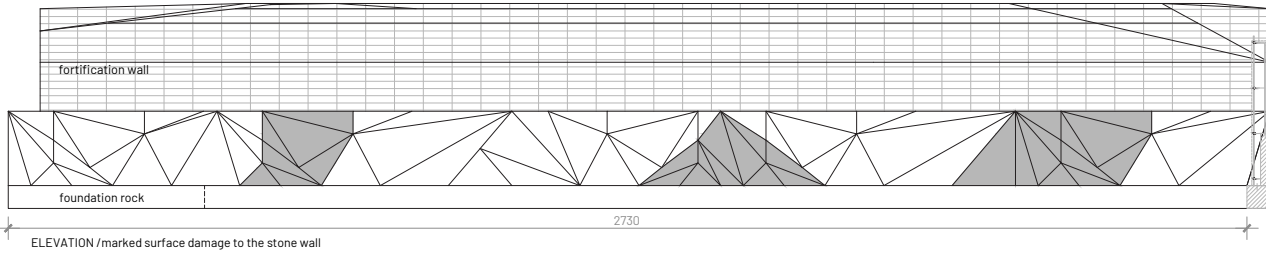


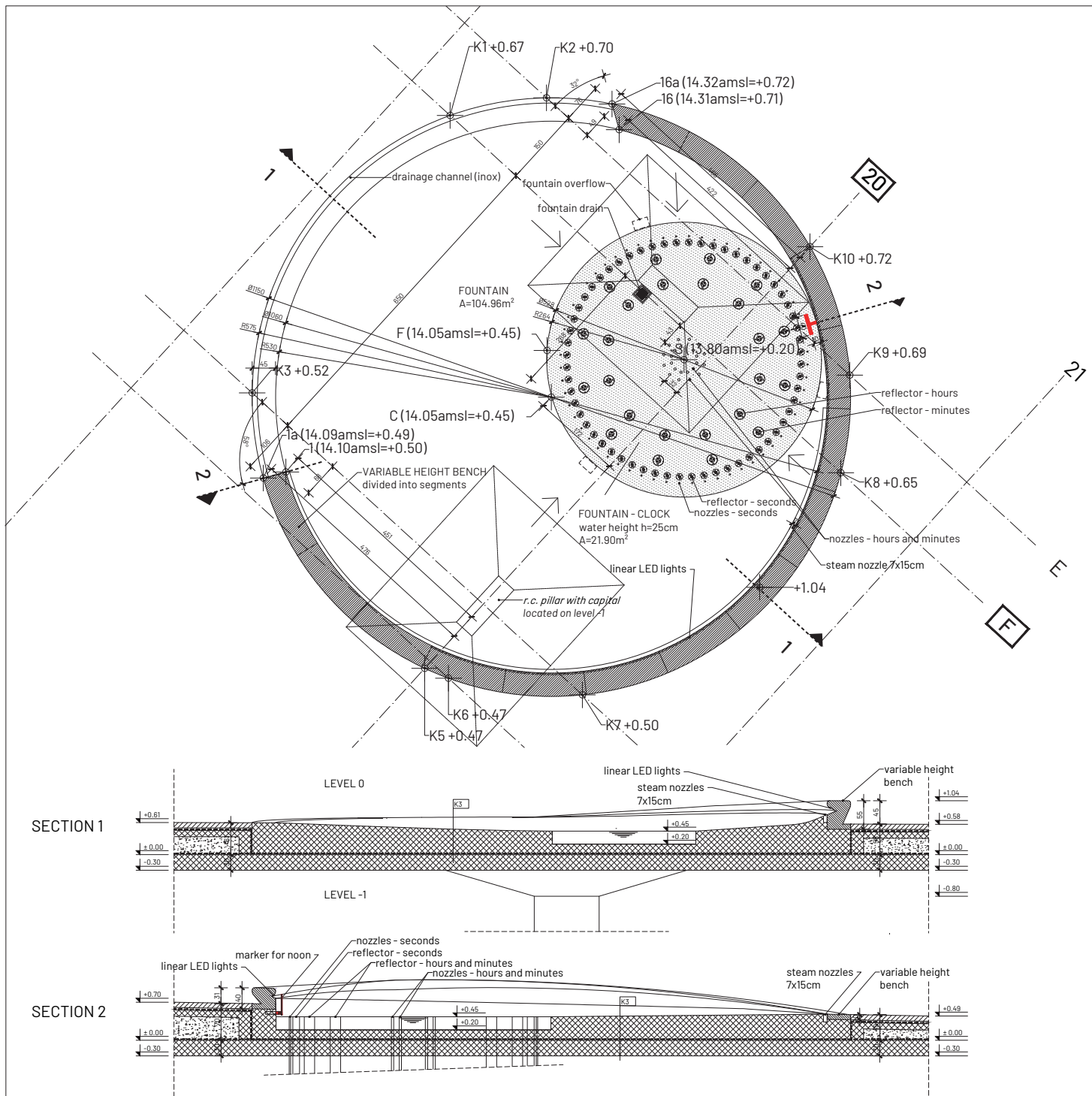
facade c

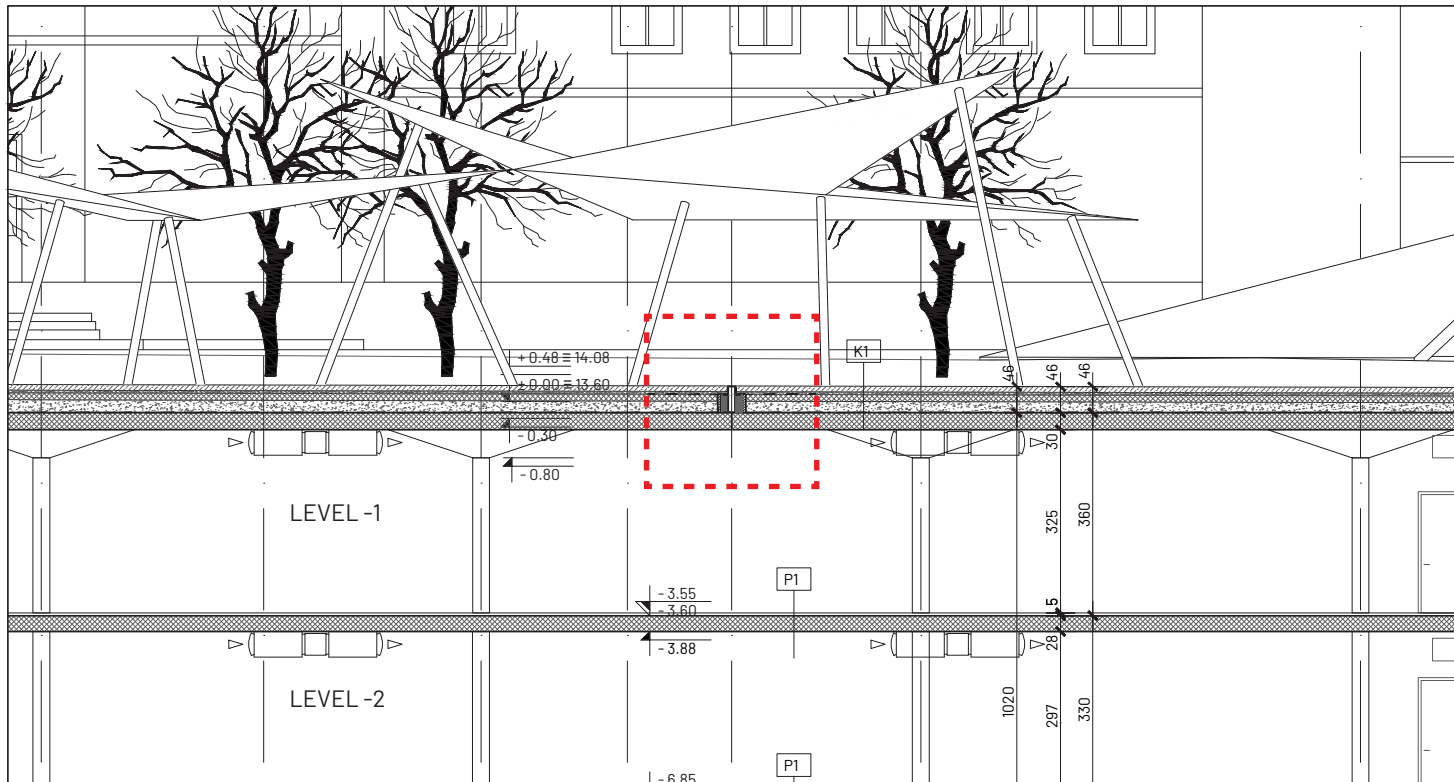


facade d









K1

roof - surface of the square, mid and higher levels
(with layers to produce fall)

- stone slab (~2700 kg/m³) 10 cm
- cement mortar 5 cm
- cement and polymer based hydro insulation coating 0.2 cm
- reinforced concrete slab (2500 kg/m³), concrete with waterproofing additives dilated into a 7.2x7.2 m grid, dilations sealed with permanently elastic sealant, filled with elasticated expanded polystyrene insulation EPS-T (thickness 2 cm) 12 (20) cm
- material to produce fall: aggregate (leftover from construction pit excavation) 5 - 88 cm
- PEHD drainage foil (1000 kg/m³) 1 cm
- synthetic UV-stable waterproofing (TPO/FPO or similar) thickness $\geq 1,8$ mm with PES felt pad (300 g/m²) ~0.2+0,3 cm
- r.c. ceiling slab 30 cm

