



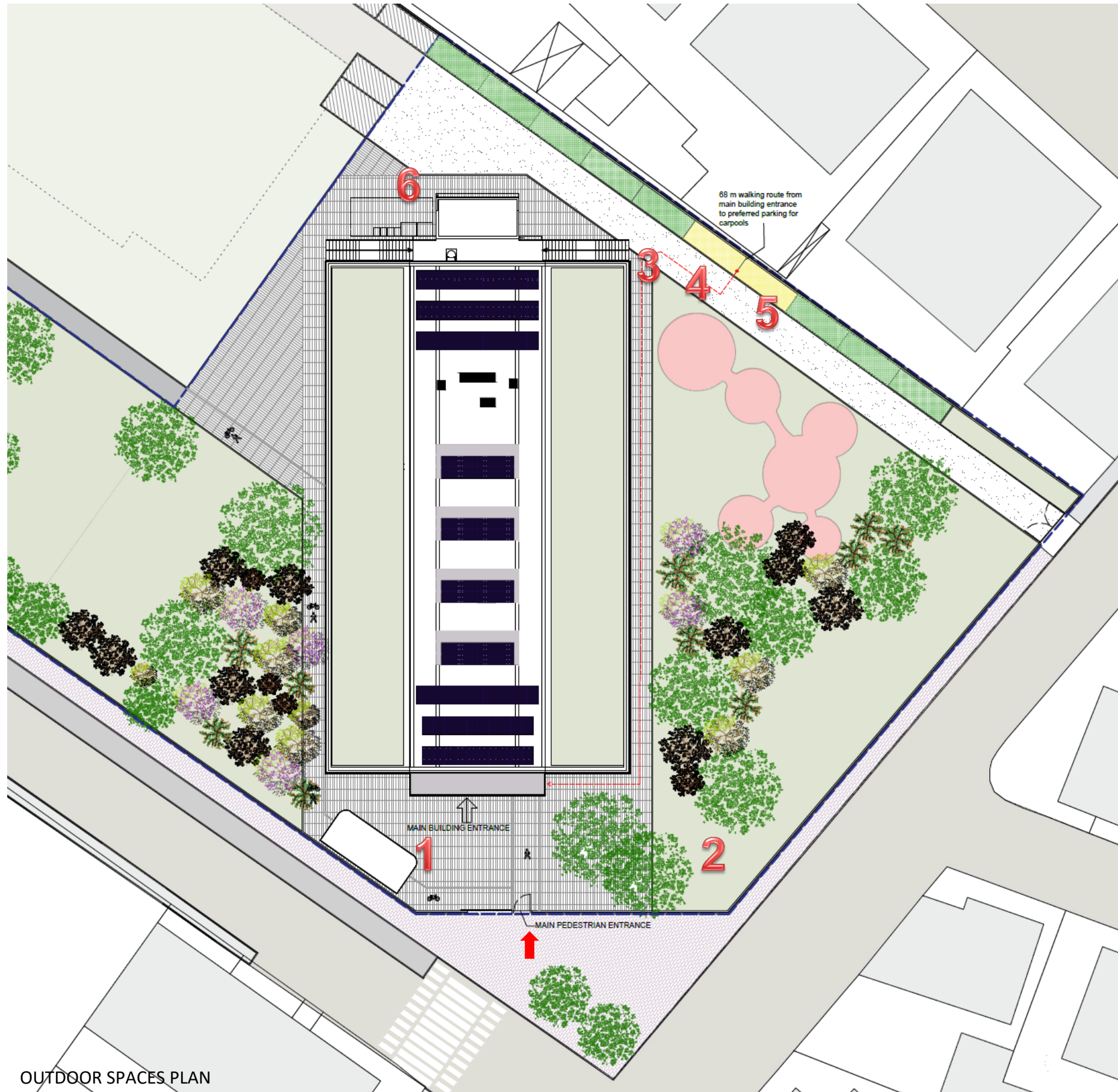
Comune
di Pesaro

SCUOLA OLIVIERI
VIA LAMARMORA
PERCORSO VISITE GUIDATE

Nuova Scuola in Via Lamarmora - Pesaro

IDc Innovation – Green Education

Guided tour maps



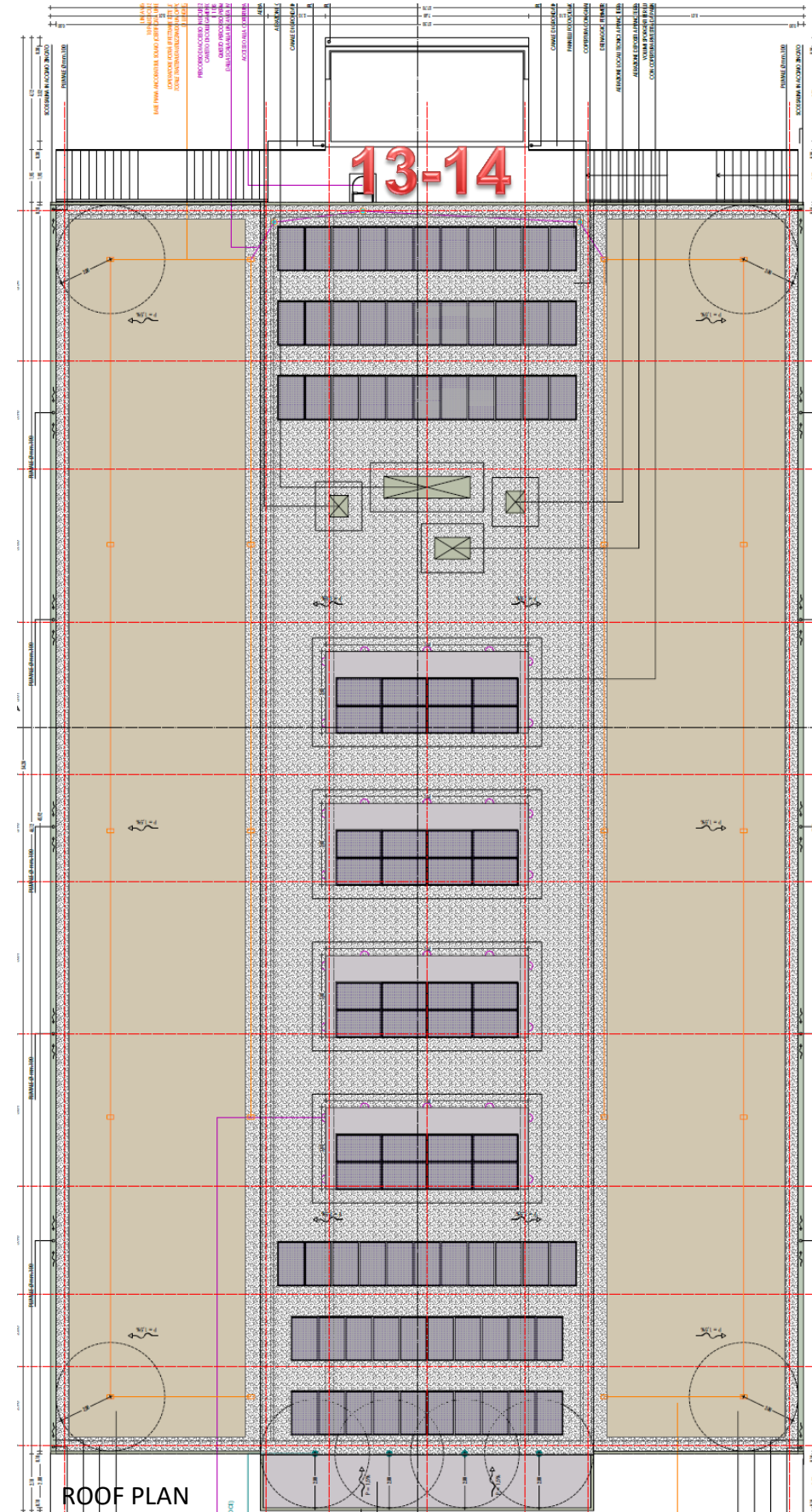
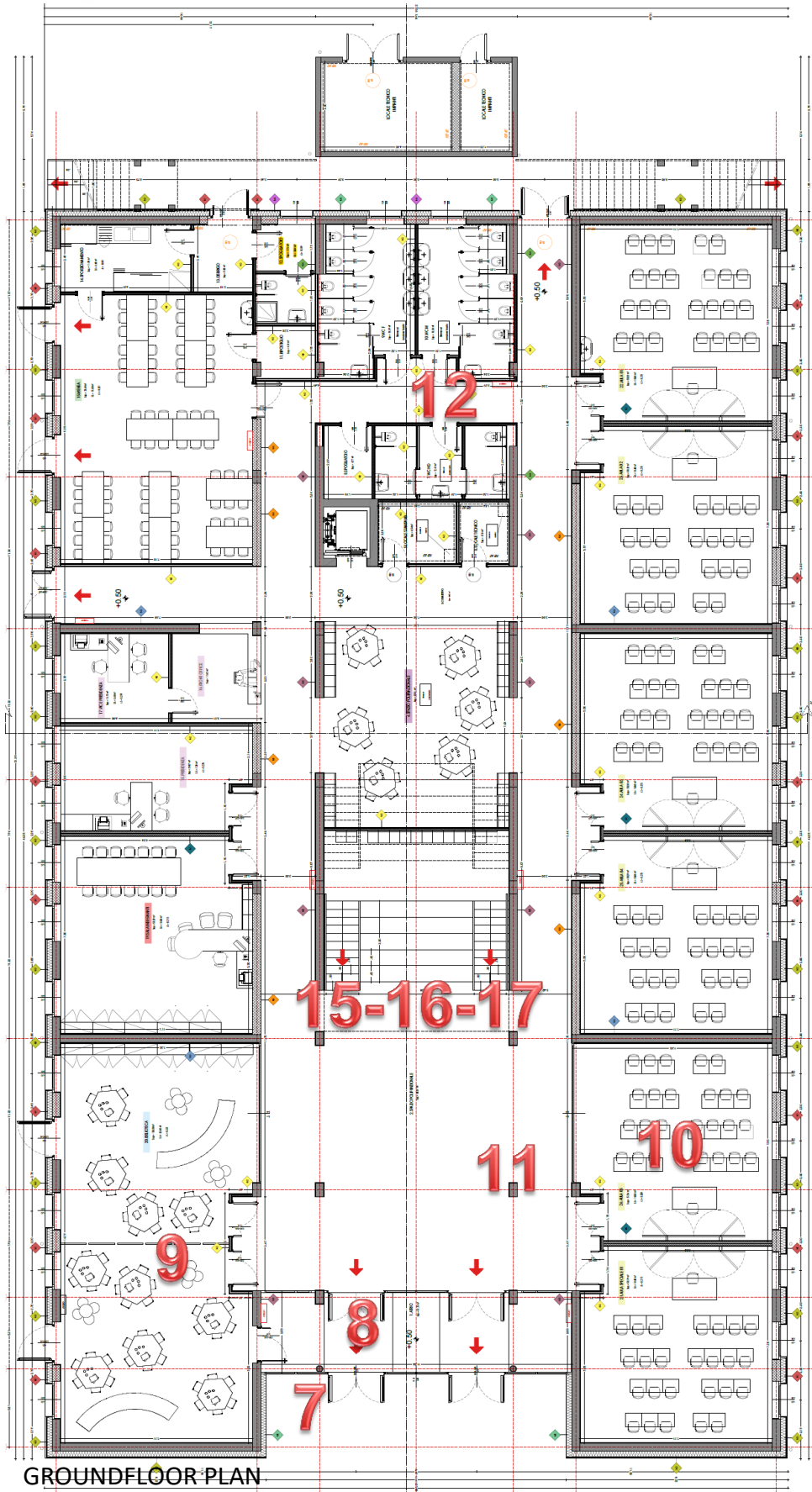
GREEN EDUCATIONAL PROGRAM

The plans show the route planned for the guided tour of the building. Each number corresponds to a stage of the tour and the related signage (refer to the document Green Educational Program Signage)

➔ STARTING POINT main entrance

1. Bicycle facilities
2. Rainwater collection and reuse for irrigation
3. Heat island reduction – external flooring
4. Preferable parking spaces (carpool and green vehicles)
5. Recharging columns for electric cars
6. External waste storage
7. Environmental Tobacco Smoke control
8. Entryway system
9. High efficiency building envelope
10. Interior lighting
11. High efficiency HVAC
12. Indoor water use reduction
13. Renewable energy systems
14. Heat Island reduction – roof
15. Low-emitting materials
16. Responsible sourcing or raw materials
17. Introduction to LEED certification and all best management construction practices implemented during building construction and the related environmental impact in accordance with the LEED v4 BD+C: School rating system

OUTDOOR SPACES PLAN



GREEN EDUCATIONAL PROGRAM

The plans show the route planned for the guided tour of the building. Each number corresponds to a stage of the tour and the related signage (refer to the document Green Educational Program Signage)

➔ STARTING POINT main entrance

1. Bicycle facilities
2. Rainwater collection and reuse for irrigation
3. Heat island reduction – external flooring
4. Preferable parking spaces (carpool and green vehicles)
5. Recharging columns for electric cars
6. External waste storage
7. Environmental Tobacco Smoke control
8. Entryway system
9. High efficiency building envelope
10. Interior lighting
11. High efficiency HVAC
12. Indoor water use reduction
13. Renewable energy systems
14. Heat Island reduction – roof
15. Low-emitting materials
16. Responsible sourcing or raw materials
17. Introduction to LEED certification and all best management construction practices implemented during building construction and the related environmental impact in accordance with the LEED v4 BD+C: School rating system