

# cabiner

INTRODUCTION PRESENTATION



The concept

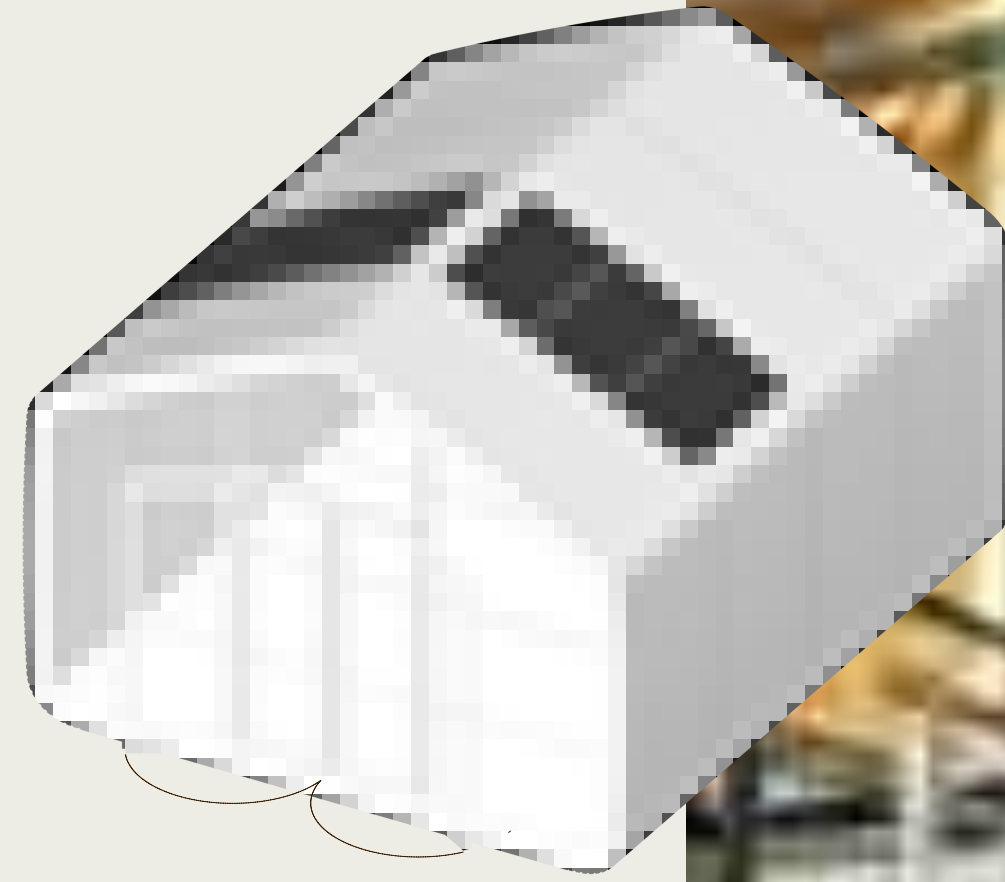
Cabiner is a network of hiking routes and innovative off-grid cabins in the wilderness.

They are only accessible by foot, offer visitors a unique nature experience and deliver a positive impact on biodiversity and the local economy.

Building

# Off-grid + Modular

Cabins are based on an innovative, modular cardboard structure. That is circular and sustainable. Combined with our off-grid technology enabling us to place the cabins in most remote locations.



Best of the best

# Red Dot Design Award

We are very proud to be recognised by one of the most prestigious international design awards. The jury especially noted our 'modern minimalist' approach and the way the cabin interacts with its surroundings and energy use.



Staatsbosbeheer

# National partnership

Cabiner offers overnight stays in the National Parks of the Netherlands thanks to an exclusive 15 year partnership with Dutch National Forest Association.

They also monitor our operations to ensure nature impact.



De Hondsrug  
UNESCO  
Global Geopark



Nationaal Park  
Drentsche Aa

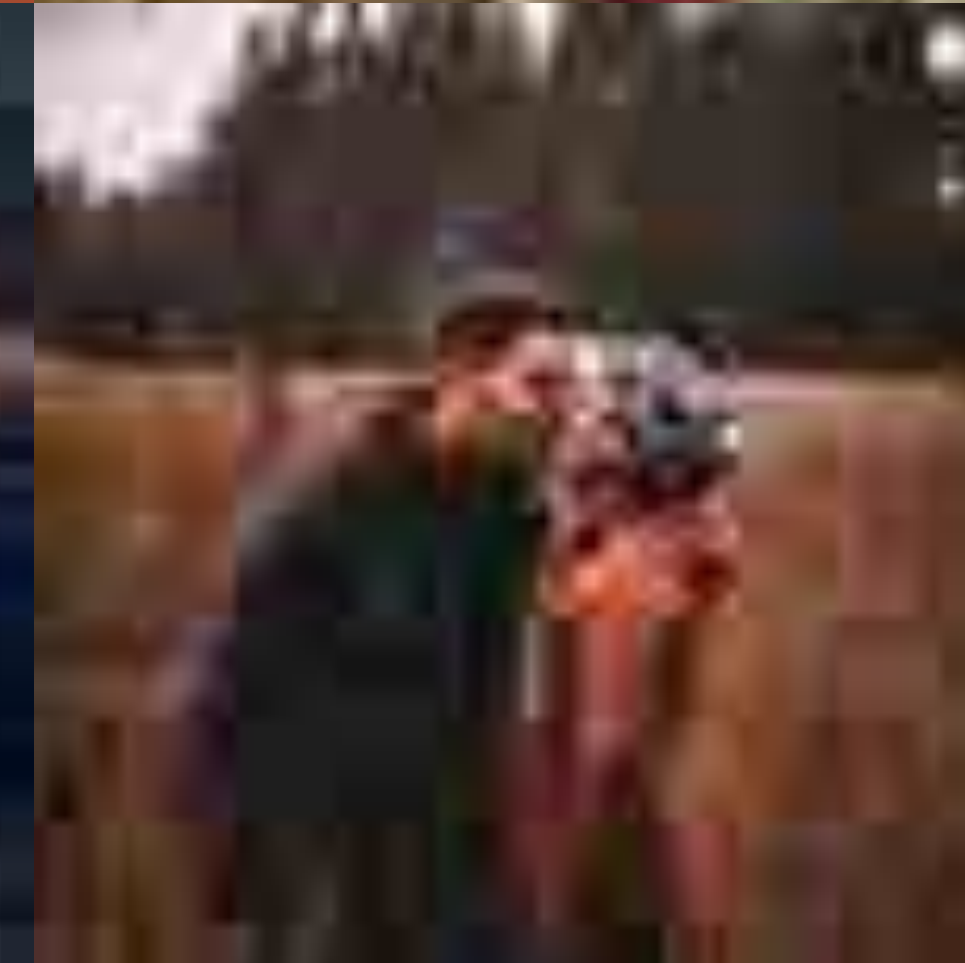


Customers & Followers

# Young & urban audience

Cabiner attracts a young,  
urban and active audience  
looking for short getaway  
from their hectic lifestyle.

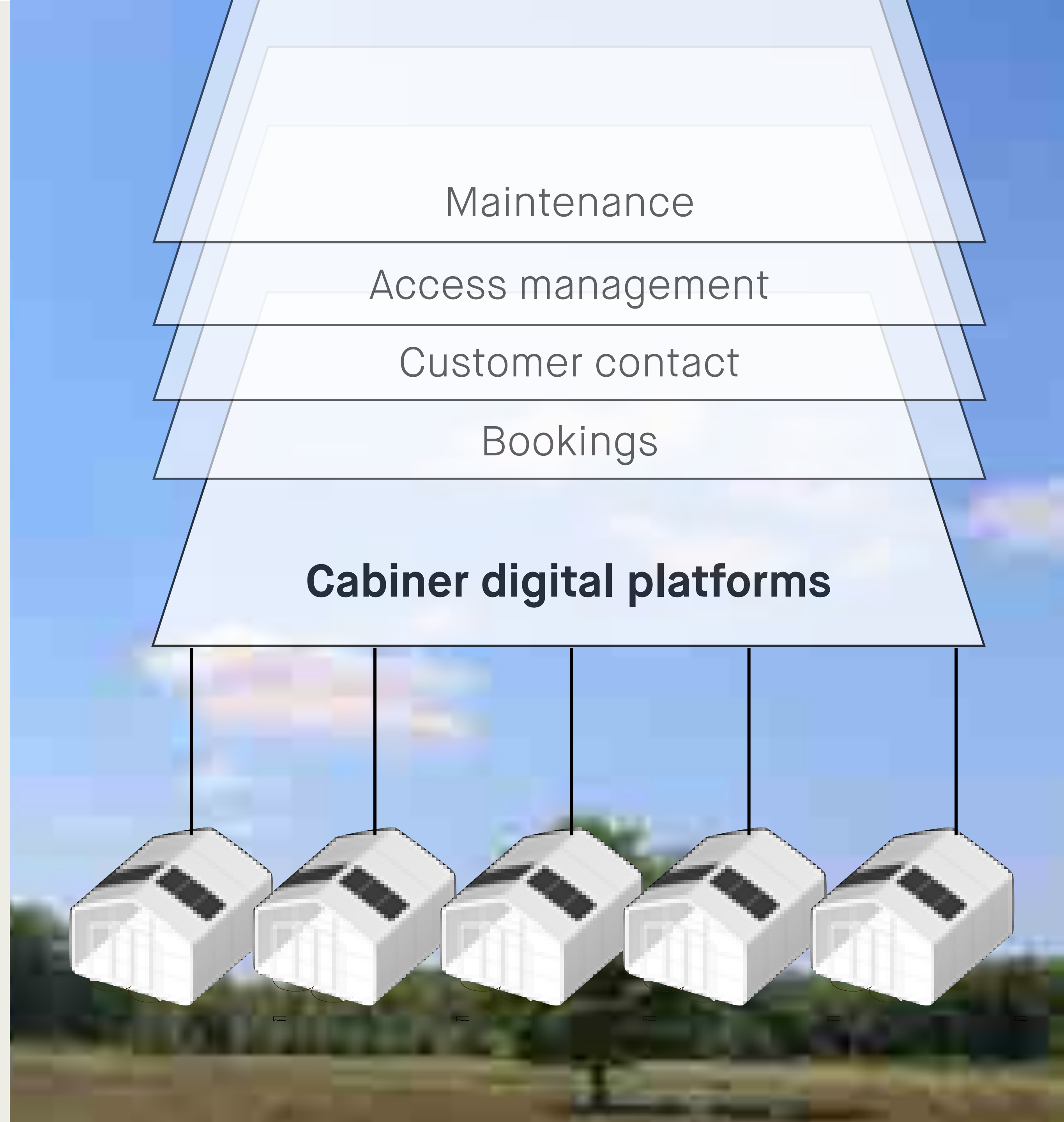
30k Instagram followers  
20k Newsletter subscribers  
120k weekly impressions  
60% female  
25-45 years old



Technology backbone

# Built to scale internationally

The operations are built on world-class cloud technology platforms enabling us to scale the networked concept to an international level efficiently.



Operations & Safety

# European regulations

The cabins fit the national standard building specifications regarding safety, construction & insulation. In addition we are monitored to the highest standards and certified to operate within Natura2000 habitats.





4-returns businessmodel

# Sustainable commerce

Cabiner is responsible for all aspects of the operation. Landowners receive a share of yearly revenue. The local rural economy is supported and a percentage is invested to improve biodiversity where we operate.

